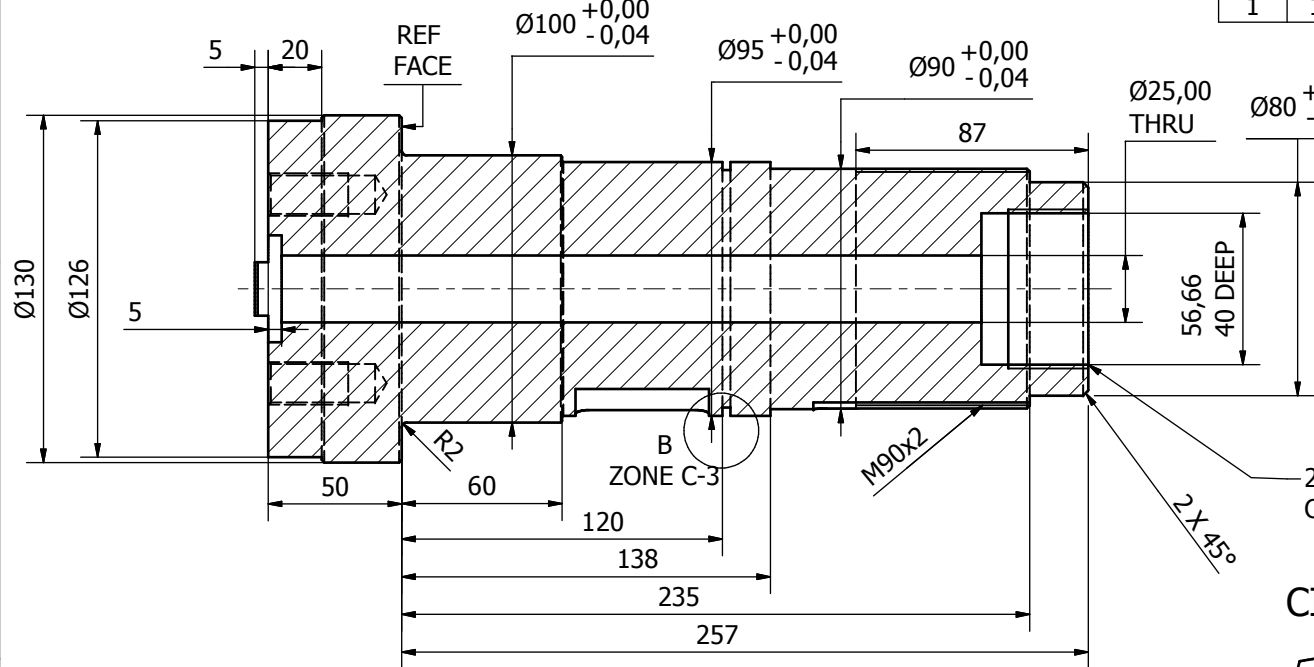
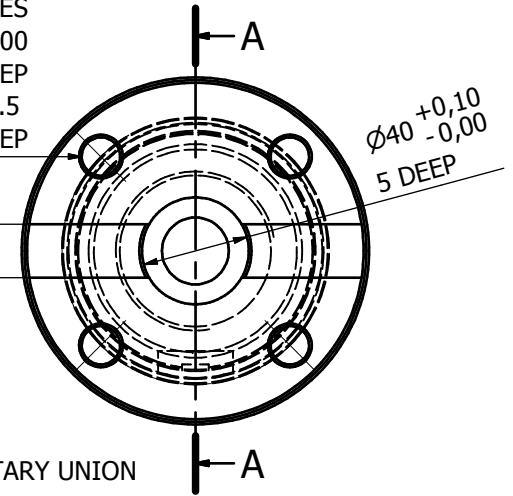


A-A (1 : 2)

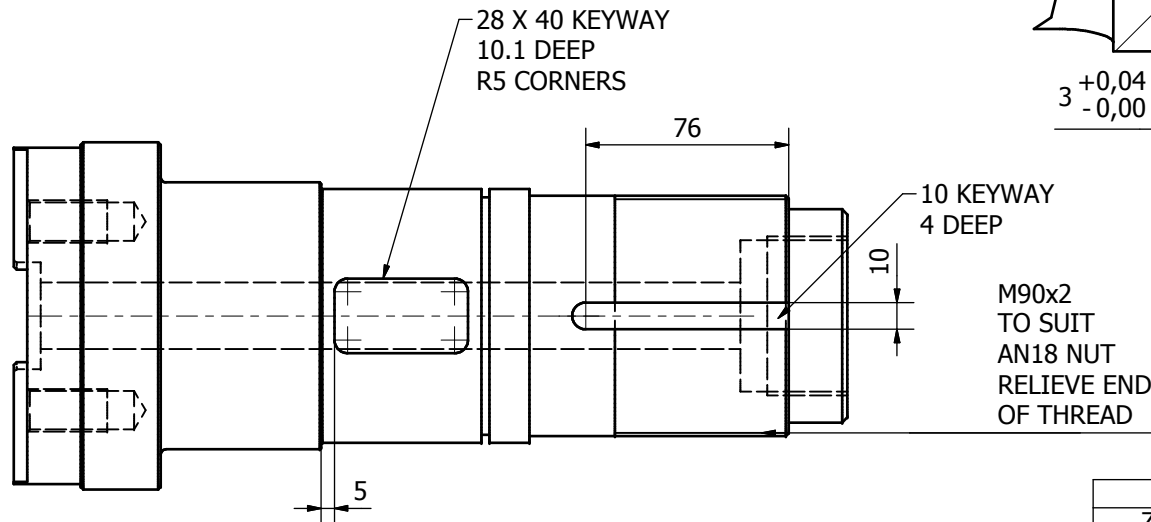
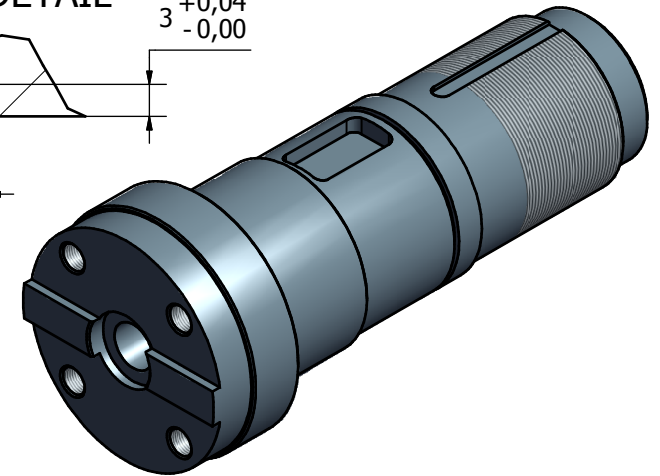
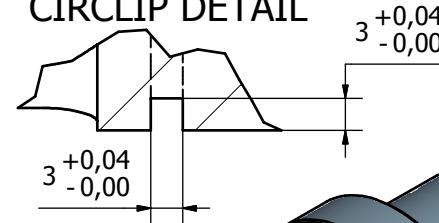


PARTS LIST					
ITEM	QTY	PART NUMBER	DESCRIPTION	MASS	MATERIAL
1	1	HBG1-007	OUTPUT SHAFT	16.697 kg	4140 Steel

M16x1.5 4 PLACES
PCD 100
DRILL 40 DEEP
TAP M16 X 1.5
30 DEEP



B (2 : 1)
CIRCLIP DETAIL



CHAMFER ALL CORNERS 1 X 45° UNLESS STATED
TOLERANCE ± 0.1 UNLESS STATED

REVISION HISTORY				
ZONE	REV	DESCRIPTIO	DATE	APPROVED
	1		26/03/2010	

Designed by PJS	Checked by	Approved by	Date	Date
				26/02/2010
HBG1-007			Edition 1	Sheet 1 / 1